



29 April 2024

USD CONSUMER PRICE INDEX APRIL 2024 (JUNE 2022 = 100)

Consumer Price Index

The USD Consumer Price Index (CPI) was **106.76** in April 2024 and **105.96** in March 2024. In April 2023 the index was **103.45**.

Inflation Rate

The month-on-month inflation rate was **0.8** percent in April 2024, gaining 0.6 percentage points on the March 2024 rate of **0.2** percent.

This means that prices as measured by the all-items USD CPI, increased by an average of 0.8 percent between March 2024 and April 2024.

The month-on-month inflation rate is given by the percentage change in the price index of the reference month of the current year compared with the index of the previous month in the same year.

The month-on-month Food and Non-Alcoholic Beverages inflation rate was **-0.3** percent in April 2024, shedding 0.4 percentage points on the March 2024 rate of **0.1** percent. The April 2024 month-on-month non-food inflation rate was **1.2** percent, gaining 1.0 percentage points on the March 2024 rate of **0.2** percent.

The year-on-year inflation rate (annual percentage change) for the month of April 2024 as measured by the all-items Consumer Price Index (CPI), was **3.2** percent.

This means that prices as measured by the all-items CPI, increased by an average of 3.2 percent between April 2023 and April 2024.

The year-on-year inflation rate is given by the percentage change in the index of the reference month of the current year compared with the index of the same month in the previous year.

Mean Month-on-Month Rate

The mean month-on-month inflation rate for the period January to April 2024 was **0.1** percent.

Period of Data Collection

Data on prices were collected during the period 11th to 17th April 2024. Hence, the changes in prices in this report refer to that period of data collection.

Contact us:

Tel: +263 242 706681/7

E-mail: prices@zimstat.co.zw

Table 1: Month-on-month inflation rate from April 2023 to April 2024

Apr-23	May-23	Jun-23	Jul-23	Aug-23	Sep-23	Oct-23	Nov-23	Dec-23	Jan-24	Feb-24	Mar-24	Apr-24
-0.2	-0.2	-0.6	0.1	0.0	0.2	0.8	0.9	1.4	-0.3	-0.2	0.2	0.8

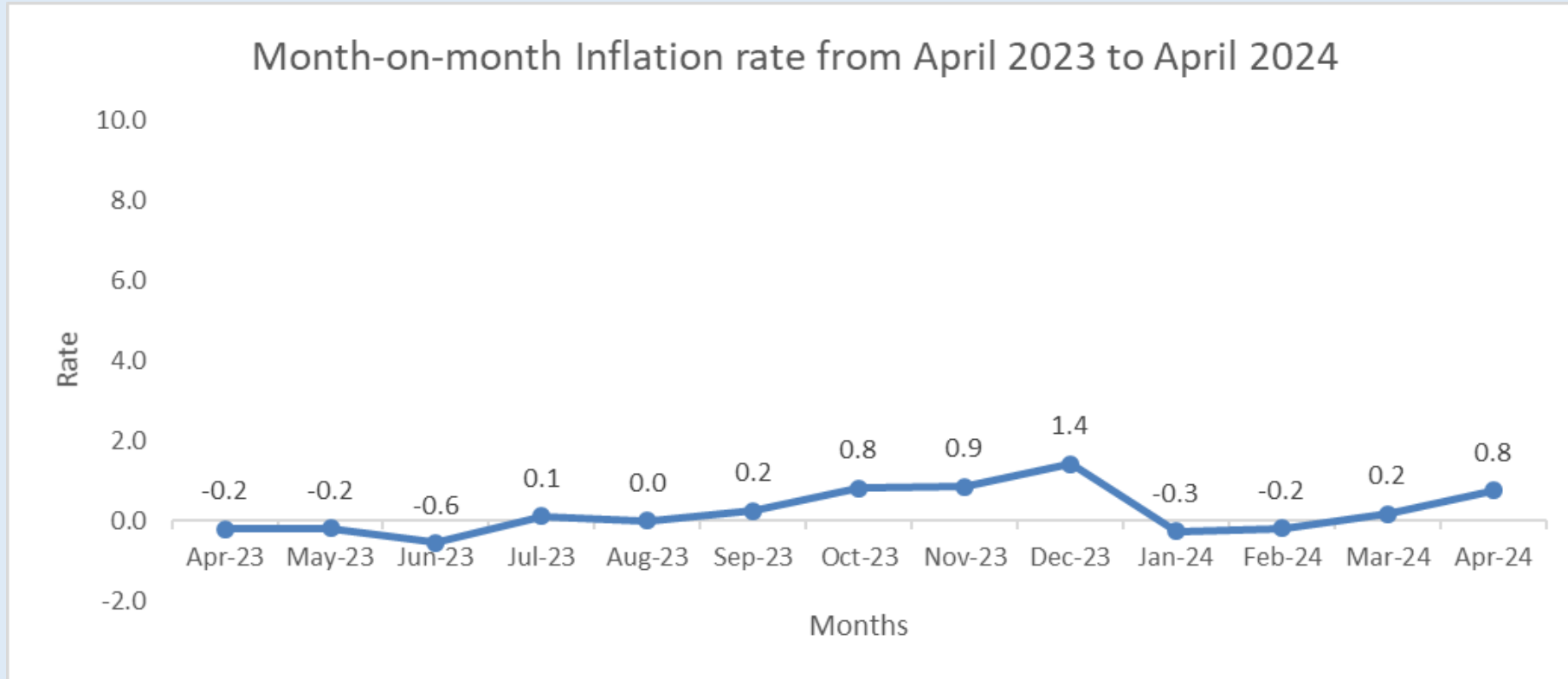


Figure 1: Month-on-month inflation rate from April 2023 to April 2024

Consumer Price Index (June 2022=100)

	Food and non alcoholic beverages	Alcoholic beverages and tobacco	Clothing and footwear	Housing water electricity gas and other fuels	Furniture, household equipment and maintenance	Health	Transport	Communication	Recreation and culture	Education	Restaurants and hotels	Miscellaneous goods and services	All Items	Inflation Rate (%) <u>Monthly</u>	Inflation Rate (%) Annual
Weights	31.3	4.9	4.3	27.6	5.3	1.4	8.4	2.7	2.3	4.3	1.1	6.5	100.0		
2019 Jun	67.54	69.00	79.08	86.48	79.67	104.59	109.35	105.95	56.98	187.62	123.69	152.18	83.03		
Jul	68.17	71.14	82.71	81.71	81.60	106.59	103.44	96.27	60.10	178.48	125.80	169.30	82.40	-0.8	
Aug	70.62	71.61	78.29	77.06	76.43	94.94	107.20	80.37	59.56	177.10	123.95	163.18	81.16	-1.5	
Sep	55.89	63.81	69.40	69.01	64.59	89.98	100.49	80.48	62.34	120.67	90.22	122.17	68.69	-15.4	
Oct	77.09	80.76	85.04	68.29	77.91	98.78	111.48	77.41	70.63	108.83	103.45	143.33	80.73	17.5	
Nov	76.61	82.71	78.89	67.35	72.61	95.07	103.29	70.09	66.30	106.72	109.29	139.45	78.85	-2.3	
Dec	81.05	85.42	78.68	67.41	71.25	93.78	100.74	67.51	64.94	101.39	113.80	145.16	80.51	2.1	
2020 Jan	81.08	82.28	76.96	67.04	69.30	92.23	99.64	65.86	61.61	112.78	119.31	137.93	79.81	-0.9	
Feb	72.14	69.94	68.29	64.07	60.76	80.02	87.96	56.80	54.93	125.60	103.89	124.69	72.36	-9.3	
Mar	65.98	74.62	74.50	67.89	62.39	92.63	86.88	70.11	65.49	89.21	90.23	106.87	70.95	-2.0	
Apr	70.42	82.07	69.44	60.99	68.78	89.65	78.54	54.88	56.36	77.54	82.12	105.76	69.88	-1.5	
May	68.53	78.50	65.52	67.69	68.37	79.89	73.99	50.86	53.48	71.69	84.91	102.57	69.74	-0.2	
Jun	61.28	78.98	67.38	73.21	66.54	83.83	82.49	60.40	58.06	79.09	79.83	100.20	69.38	-0.5	-16.4
Jul	65.06	82.19	69.97	70.10	69.43	85.83	84.21	52.49	53.13	73.89	72.17	82.16	69.49	0.2	-15.7
Aug	62.59	77.03	70.07	70.03	69.49	84.98	84.62	75.33	50.44	73.89	71.38	86.44	68.77	-1.0	-15.3
Sep	62.02	76.94	69.71	69.90	67.28	84.14	79.99	75.02	50.20	71.95	69.24	82.79	67.88	-1.3	-1.2
Oct	61.93	75.57	67.80	70.74	64.67	83.98	80.07	74.86	50.25	71.94	70.88	82.76	67.76	-0.2	-16.1
Nov	64.13	76.60	69.26	70.78	64.57	85.44	80.82	74.78	50.47	81.01	73.55	82.71	69.00	1.8	-12.5
Dec	66.23	77.77	71.48	73.28	65.52	85.86	82.78	74.20	50.49	80.00	76.53	83.54	70.85	2.7	-12.0
2021 Jan	67.34	79.80	72.62	73.66	68.32	87.50	84.82	75.36	50.00	81.41	75.86	86.65	71.99	1.6	-9.8
Feb	68.31	80.58	72.38	71.32	67.98	88.81	85.52	73.71	55.94	79.61	75.05	86.76	71.94	-0.1	-0.6
Mar	68.33	80.55	72.31	72.12	70.95	86.20	86.02	76.95	55.69	79.61	75.50	86.32	72.37	0.6	2.0
Apr	68.26	80.54	71.86	72.30	70.92	86.35	86.61	77.55	55.04	93.29	76.50	82.98	72.55	0.2	3.8
May	68.34	80.88	73.61	73.42	71.51	86.10	87.22	77.53	79.77	94.59	77.60	83.07	73.90	1.9	6.0
Jun	69.82	82.08	76.48	80.21	76.51	87.23	87.53	78.11	80.74	99.17	79.91	84.48	76.97	4.2	10.9
Jul	69.43	82.89	77.79	80.24	76.45	86.19	87.70	78.20	81.08	99.09	79.73	85.26	76.97	0.0	10.8
Aug	69.53	83.87	78.27	80.70	77.20	86.74	88.38	79.85	81.10	99.02	81.31	86.22	77.38	0.5	12.5

Sep	70.70	84.79	78.25	81.23	78.31	86.83	88.04	83.12	81.57	98.17	82.26	87.35	78.18	1.0	15.2
Oct	72.48	85.61	78.79	81.68	79.70	86.95	88.80	89.16	81.47	100.21	83.34	87.74	79.37	1.5	17.1
Nov	74.20	85.90	78.99	82.15	80.59	87.13	89.57	91.54	81.53	92.90	84.39	88.32	80.22	1.1	16.3
Dec	74.91	87.41	79.69	82.87	81.63	87.30	88.36	91.75	82.11	92.90	85.16	89.58	80.86	0.8	14.1
2022 Jan	76.03	88.05	80.16	83.85	81.97	87.57	88.47	93.38	92.58	93.67	86.57	89.30	82.04	1.4	14.0
Feb	77.75	89.04	82.79	84.85	83.44	87.80	89.00	93.57	93.08	93.67	87.62	90.26	83.32	1.6	15.8
Mar	79.55	90.97	84.54	85.13	84.45	88.19	93.78	93.93	93.57	93.67	88.37	89.51	84.65	1.6	17.0
Apr	82.92	92.58	85.79	95.23	89.17	88.79	94.80	95.91	94.29	95.72	92.98	90.53	89.28	5.5	23.1
May	87.74	94.45	92.99	95.39	90.23	89.48	96.66	98.50	95.21	95.74	95.59	92.27	91.97	3.0	24.5
Jun	100.00	100.00	100.00	100.00	100.00	100.00	100.00	100.00	100.00	100.00	100.00	100.00	100.00	8.7	29.9
Jul	108.20	102.61	101.67	99.72	105.85	101.64	100.74	100.29	101.77	112.05	101.40	100.59	103.70	3.7	34.7
Aug	111.16	104.79	103.91	100.34	107.36	102.59	101.89	100.80	102.15	112.09	102.11	102.55	105.35	1.6	36.1
Sep	106.23	101.36	101.88	103.52	103.79	101.51	100.40	111.56	102.10	120.21	100.07	100.48	104.57	-0.7	33.8
Oct	108.21	102.04	103.18	111.32	105.69	102.11	101.18	113.11	103.01	120.21	100.67	100.81	107.70	3.0	35.7
Nov	108.26	101.56	103.51	111.42	106.32	102.92	101.30	116.65	103.25	141.08	120.73	100.14	108.95	1.2	35.8
Dec	109.68	101.63	104.25	111.46	106.06	102.75	100.89	120.92	102.88	141.05	121.56	100.75	109.54	0.5	35.5
2023 Jan	108.39	101.69	103.57	111.58	106.42	102.94	101.28	116.65	103.30	141.08	120.79	101.32	109.13	-0.4	33.0
Feb	102.28	97.45	101.91	105.89	105.07	101.77	96.34	113.75	100.78	141.08	116.16	92.90	104.13	-4.6	25.0
Mar	101.24	96.60	101.40	105.85	104.32	101.44	96.13	114.36	100.48	141.08	115.93	92.58	103.66	-0.5	22.5
Apr	100.93	96.52	101.32	105.78	104.12	101.43	95.75	113.75	100.18	141.08	115.84	92.38	103.45	-0.2	15.9
May	100.59	96.45	101.26	105.58	104.02	101.42	95.53	113.66	100.15	141.08	115.80	92.40	103.26	-0.2	12.3
Jun	100.45	96.59	100.20	104.21	103.05	101.18	95.23	113.60	98.81	141.08	115.41	92.44	102.68	-0.6	2.7
Jul	100.28	96.49	100.70	104.26	103.62	101.18	95.19	113.64	98.78	142.30	118.02	93.01	102.80	0.1	-0.9
Aug	100.25	96.44	100.66	104.23	103.44	101.19	95.58	113.62	98.78	142.31	118.02	93.04	102.81	0.0	-2.4
Sep	100.59	96.54	100.62	104.24	103.74	100.97	96.13	116.55	98.33	141.70	117.76	93.70	103.06	0.2	-1.4
Oct	101.65	97.10	101.53	105.13	104.29	101.40	97.02	116.55	97.96	142.90	118.10	94.23	103.90	0.8	-3.5
Nov	102.01	97.25	101.70	107.46	103.90	101.50	97.02	119.18	97.73	145.70	116.06	93.89	104.79	0.9	-3.8
Dec	104.31	98.77	102.81	109.34	104.54	101.54	96.86	119.37	99.11	145.70	116.65	94.70	106.27	1.4	-3.0
2024 Jan	105.68	96.58	99.15	107.17	103.15	96.49	107.00	105.41	92.92	152.64	116.30	89.52	105.98	-0.3	-2.9
Feb	104.91	96.18	98.86	107.11	103.79	96.58	107.35	105.39	92.57	152.64	116.34	90.13	105.79	-0.2	1.6
Mar	105.06	96.17	99.02	107.10	104.41	96.74	108.11	105.03	92.43	152.64	117.07	90.62	105.96	0.2	2.2
Apr	104.75	96.21	99.38	108.79	104.70	96.68	108.41	104.71	91.76	162.81	115.92	90.25	106.76	0.8	3.2

Weights

	Jun-22	Dec-22	Jan-23	Feb-23	Mar-23	Apr-23	May-23	Jun-23	Jul-23	Aug-23	Sep-23	Oct-23	Nov-23	Dec-23	Jan-24	Feb-24	Mar-24	Apr-24	
FOOD & NON ALCOHOLIC BEVERAGES	31.30	100.00	109.68	108.39	102.28	101.24	100.93	100.59	100.45	100.28	100.25	100.59	101.65	102.01	104.31	105.68	104.91	105.06	104.75
Food	30.34	100.00	109.68	108.27	102.04	100.99	100.67	100.33	100.16	100.05	100.01	100.42	101.44	101.80	104.08	105.47	104.54	104.63	104.35
Bread and Cereals	8.72	100.00	105.26	104.65	102.54	101.63	101.45	101.24	101.17	100.93	100.77	101.85	102.86	103.55	105.25	111.80	110.25	110.51	110.32
Meat	5.79	100.00	117.39	113.33	109.91	109.06	108.76	108.65	108.95	108.54	108.28	108.61	109.96	111.24	113.56	114.69	115.26	114.37	111.60
Fish and sea food	1.26	100.00	98.13	100.24	99.34	98.93	98.43	98.43	98.74	98.79	98.71	99.07	99.35	100.00	100.67	101.71	101.92	102.20	101.51
Milk,Cheese,Eggs	1.62	100.00	107.25	105.22	100.72	100.32	100.04	99.97	100.26	100.20	100.08	99.66	101.26	100.60	102.09	105.98	106.21	104.94	104.11
Oils and fats	1.90	100.00	97.89	97.09	94.03	93.03	91.90	91.20	90.19	89.66	88.80	87.64	88.24	88.12	91.33	90.09	89.08	88.92	87.48
Fruit	1.15	100.00	114.05	111.27	98.68	95.42	94.85	94.75	90.89	94.61	94.47	96.61	96.91	98.14	99.97	101.73	99.91	99.56	98.05
Vegetables	7.81	100.00	114.84	113.49	98.17	96.81	96.38	95.66	95.58	95.22	95.50	95.52	96.78	96.58	99.84	97.45	95.49	96.02	96.03
Sugar,jam,honey,chocolate and confectionery	1.56	100.00	104.87	105.78	105.32	104.55	105.20	104.67	104.81	104.93	106.04	106.49	106.48	105.31	107.66	102.22	103.14	105.42	115.60
Food products n.e.c	0.51	100.00	103.98	104.47	101.63	100.92	100.83	100.66	100.57	101.18	101.25	101.53	101.40	101.59	102.36	98.69	97.50	97.91	98.16
Non alcoholic beverages	0.97	100.00	109.64	112.36	109.85	109.16	109.01	108.95	109.52	107.55	107.61	106.00	108.41	108.46	111.37	112.29	116.47	118.53	117.10
Coffee, tea and cocoa	0.22	100.00	106.93	107.84	104.81	104.17	104.10	103.38	104.21	104.35	104.92	102.76	103.82	103.52	106.63	96.88	97.83	98.86	98.76
Mineral waters, soft drinks, fruit and vegetable juices	0.75	100.00	110.41	113.66	111.29	110.59	110.42	110.55	111.04	108.46	108.38	106.92	109.73	109.87	112.73	116.70	121.80	124.15	122.35
ALCOHOLIC BEVERAGES & TOBACCO	4.90	100.00	101.63	101.69	97.45	96.60	96.52	96.45	96.59	96.49	96.44	96.54	97.10	97.25	98.77	96.58	96.18	96.17	96.21
Alcoholic beverages	3.45	100.00	101.30	101.65	98.99	98.03	97.98	97.92	98.16	98.14	98.08	98.12	98.13	98.02	99.35	98.49	98.35	98.34	98.07
Spirits	0.75	100.00	105.75	106.16	103.68	102.66	102.63	102.69	102.76	103.13	103.09	103.25	103.10	102.25	102.64	103.01	102.46	102.43	101.95
Wine	0.72	100.00	99.59	100.23	98.47	97.39	97.29	97.27	97.37	98.28	98.22	98.90	97.60	97.51	98.56	98.92	98.76	98.66	99.07
Beer	1.98	100.00	100.22	100.44	97.39	96.50	96.47	96.33	96.70	96.20	96.13	95.89	96.43	96.59	98.38	96.61	96.63	96.67	96.23
Tobacco	1.45	100.00	102.42	101.80	93.81	93.20	93.05	92.98	92.85	92.57	92.55	92.78	94.66	95.45	97.41	92.04	91.06	91.01	91.82
Tobacco	1.45	100.00	102.42	101.80	93.81	93.20	93.05	92.98	92.85	92.57	92.55	92.78	94.66	95.45	97.41	92.04	91.06	91.01	91.82
CLOTHING & FOOTWEAR	4.35	100.00	104.25	103.57	101.91	101.40	101.32	101.26	100.20	100.70	100.66	100.62	101.53	101.70	102.81	99.15	98.86	99.02	99.38
Clothing	3.41	100.00	104.05	103.95	102.45	101.95	101.86	101.78	100.50	101.20	101.16	101.05	101.54	101.73	102.88	98.26	98.11	98.34	99.18
Clothing materials	0.08	100.00	97.70	100.81	100.36	100.26	100.08	100.08	99.98	99.59	99.59	99.59	101.74	100.23	99.92	83.78	84.00	84.09	84.13
Garments	2.57	100.00	104.82	104.56	103.36	102.79	102.70	102.57	101.03	102.00	101.95	101.83	102.28	102.60	103.80	98.69	98.62	98.86	100.01
Other articles of clothing and clothing accessories	0.34	100.00	101.64	102.15	97.70	97.53	97.40	97.53	97.33	97.30	97.30	97.36	98.12	98.03	98.10	92.88	93.13	93.26	92.87
Cleaning, repair and hire of clothing	0.21	100.00	103.16	102.89	102.89	102.89	102.89	102.89	102.89	102.79	102.79	102.27	102.34	102.34	102.34	109.37	107.30	107.73	107.73
Second hand clothing	0.21	100.00	102.09	101.78	99.61	98.74	98.74	98.74	97.17	96.97	96.97	96.97	97.24	97.24	101.24	96.81	96.81	96.81	97.13
Footwear	0.93	100.00	104.95	102.20	99.92	99.39	99.35	99.34	99.09	98.87	98.84	99.04	101.49	101.57	102.56	102.41	101.60	101.53	100.13
Shoes and other footwear	0.76	100.00	105.86	102.47	99.69	99.10	99.06	99.04	98.66	98.39	98.35	98.60	101.64	101.74	102.95	104.54	103.93	103.84	102.37
Repair and hire of footwear	0.17	100.00	100.96	101.00	100.92	100.66	100.66	100.66	100.97	100.97	100.97	100.97	100.84	100.84	100.84	93.03	91.41	91.41	90.29
HOUSING, WATER, ELECTRICITY, GAS & OTHER FUEL	27.62	100.00	111.46	111.58	105.89	105.85	105.78	105.58	104.21	104.26	104.23	104.24	105.13	107.46	109.34	107.17	107.11	107.10	108.79
Actual rentals for housing	19.83	100.00	110.54	110.62	104.63	104.63	104.56	104.40	104.07	104.19	104.19	104.19	105.38	105.38	102.58	102.58	102.58	102.58	105.03
Actual rentals for housing	19.83	100.00	110.54	110.62	104.63	104.63	104.56	104.40	104.07	104.19	104.19	104.19	105.38	105.38	102.58	102.58	102.58	102.58	105.03
Maintenance and repair of the dwelling	0.18	100.00	101.14	100.12	95.53	94.95	94.73	94.67	94.94	94.99	94.99	95.71	97.74	100.24	99.68	99.81	95.82	96.00	95.82
Materials for the maintenance and repair of the dwelling	0.18	100.00	101.14	100.12	95.53	94.95	94.73	94.67	94.94	94.99	94.99	95.71	97.74	100.24	99.68	99.81	95.82	96.00	95.82
Water supply and miscellaneous services relating to the	1.89	100.00	111.07	111.99	99.53	99.53	99.53	99.51	99.51	99.51	99.51	99.63	99.56	99.56	99.56	72.09	72.11	72.11	72.15
Water Supply	1.37	100.00	113.44	114.99	98.63	98.63	98.63	98.61	98.61	98.61	98.61	98.77	98.77	98.77	98.77	61.37	61.24	61.24	61.24
Refuse collection	0.07	100.00	101.43	101.81	101.77	101.77	101.77	101.77	101.77	101.77	101.77	101.77	99.95	99.95	99.95	106.27	106.28	106.30	106.30
Sewerage collection	0.14	100.00	98.18	98.78	98.78	98.78	98.78	98.78	98.78	98.78	98.78	98.87	98.87	98.87	98.87	84.18	84.18	84.18	84.18
Other services relating to the dwelling n.e.c (owners rates)	0.30	100.00	108.67	107.05	103.39	103.39	103.39	103.39	103.39	103.39	103.39	103.39	103.39	103.39	103.39	106.84	107.55	107.55	107.78
Electricity, gas and other fuels	5.73	100.00	115.08	115.12	112.70	112.52	112.41	112.00	106.53	106.34	106.22	106.17	106.33	117.47	136.29	134.88	134.69	134.66	134.26

Electricity	2.95	100.00	124.36	124.53	121.72	121.72	121.72	121.72	121.34	121.34	121.34	121.34	121.34	142.57	179.10	179.10	179.10	179.10	179.10
Gas	0.40	100.00	98.81	97.14	91.54	91.50	90.39	84.59	84.39	82.05	80.28	79.59	80.56	83.72	84.23	84.72	83.65	83.30	82.55
Liquid fuels	0.17	100.00	100.62	104.07	94.72	88.57	87.68	87.68	87.16	87.16	87.16	87.16	90.37	90.37	88.92	86.18	82.68	82.68	70.44
Solid fuels	2.20	100.00	106.75	106.66	105.90	105.90	105.88	105.88	92.23	92.18	92.18	92.18	92.18	92.12	92.12	88.56	88.54	88.54	88.59
FURNITURE AND EQUIPMENT	5.29	100.00	106.06	106.42	105.07	104.32	104.12	104.02	103.05	103.62	103.44	103.74	104.29	103.90	104.54	103.15	103.79	104.41	104.70
FURNISH, HSE EQUIP & ROUTINE MAINTENANCE	0.89	100.00	102.72	101.95	101.28	100.33	100.01	100.00	99.43	99.61	99.46	99.75	100.82	101.37	100.99	95.26	95.04	94.63	94.20
Furniture and furnishings, carpets and other floor coverings	0.89	100.00	102.72	101.95	101.28	100.33	100.01	100.00	99.43	99.61	99.46	99.75	100.82	101.37	100.99	95.26	95.04	94.63	94.20
Household textiles	0.45	100.00	103.19	104.27	103.55	103.07	103.10	103.10	102.23	102.97	102.92	102.86	101.48	101.26	101.36	94.98	95.79	96.40	97.18
Household textiles	0.45	100.00	103.19	104.27	103.55	103.07	103.10	103.10	102.23	102.97	102.92	102.86	101.48	101.26	101.36	94.98	95.79	96.40	97.18
Household appliances	0.36	100.00	107.60	108.98	108.58	108.28	108.09	108.18	100.92	106.32	105.89	105.67	104.12	104.65	107.78	103.25	103.28	104.21	103.67
Major household appliances whether electric or not	0.36	100.00	107.60	108.98	108.58	108.28	108.09	108.18	100.92	106.32	105.89	105.67	104.12	104.65	107.78	103.25	103.28	104.21	103.67
Glassware, tableware and household utensils	0.06	100.00	105.54	105.74	102.38	102.24	102.24	101.17	101.84	101.72	101.72	101.58	101.83	101.91	106.65	110.22	110.80	111.83	112.71
Glassware,tableware,household utensils	0.06	100.00	105.54	105.74	102.38	102.24	102.24	101.17	101.84	101.72	101.72	101.58	101.83	101.91	106.65	110.22	110.80	111.83	112.71
Tools and equipment for house and garden	0.41	100.00	99.40	101.54	99.25	98.56	98.47	98.29	94.10	97.22	97.14	97.21	98.32	98.29	98.16	96.91	97.45	97.69	97.46
Major tools and equipment	0.38	100.00	98.99	101.44	99.12	98.51	98.42	98.24	93.75	97.13	97.04	97.11	98.08	98.04	97.90	96.56	97.11	97.42	97.24
Small tools and miscellaneous accessories	0.03	100.00	104.68	102.75	100.93	99.15	99.08	98.93	98.59	98.41	98.43	98.49	101.44	101.50	101.40	101.42	101.88	101.17	100.24
Goods and services for routine household maintenance	3.12	100.00	108.14	108.36	106.78	105.98	105.77	105.63	105.64	105.43	105.23	105.69	106.54	105.70	106.44	107.25	108.18	109.11	109.69
Non durable household goods	2.39	100.00	106.51	106.78	104.72	103.68	103.46	103.28	103.29	103.12	102.86	103.47	105.01	103.91	104.59	105.65	106.87	108.08	107.46
Domestic Services and household service	0.73	100.00	113.49	113.58	113.58	113.58	113.37	113.37	113.37	113.02	113.02	113.02	111.57	111.57	112.52	112.52	112.52	112.52	117.04
HEALTH	1.42	100.00	102.75	102.94	101.77	101.44	101.43	101.42	101.18	101.18	101.19	100.97	101.40	101.50	101.54	96.49	96.58	96.74	96.68
Products and services and medical equipment	0.59	100.00	104.58	104.20	102.01	101.26	101.25	101.22	101.27	101.25	101.28	100.62	101.05	101.13	101.22	95.78	95.74	96.02	95.40
pharmaceutical products	0.59	100.00	104.58	104.20	102.01	101.26	101.25	101.22	101.27	101.25	101.28	100.62	101.05	101.13	101.22	95.78	95.74	96.02	95.40
Outpatient services	0.82	100.00	101.50	102.11	101.67	101.63	101.63	101.63	101.18	101.18	101.18	101.28	101.72	101.84	101.84	97.05	97.22	97.30	97.64
Medical Services	0.59	100.00	102.29	101.94	101.33	101.31	101.31	101.31	101.50	101.50	101.50	101.64	102.26	102.26	102.26	95.03	95.25	95.36	95.84
Medical 'Dental services	0.02	100.00	102.83	103.21	103.21	102.73	102.73	102.73	82.46	82.46	82.46	82.46	82.46	82.46	82.46	84.75	85.20	85.20	85.20
Para-medical services	0.21	100.00	99.10	102.47	102.47	102.40	102.40	102.40	102.48	102.48	102.48	102.48	102.48	102.95	102.95	104.25	104.25	104.25	104.25
Hospital services	0.02	100.00	99.97	99.97	98.80	98.80	98.80	98.80	98.80	98.80	98.80	98.80	98.80	98.80	98.80	94.70	94.70	94.70	94.70
Hospital services	0.02	100.00	99.97	99.97	98.80	98.80	98.80	98.80	98.80	98.80	98.80	98.80	98.80	98.80	98.80	94.70	94.70	94.70	94.70
TRANSPORT	8.39	100.00	100.89	101.28	96.34	96.13	95.75	95.53	95.23	95.19	95.58	96.13	97.02	97.02	96.86	107.00	107.35	108.11	108.41
Purchase of vehicles	0.59	100.00	101.10	101.22	100.44	100.34	100.26	100.25	99.80	100.20	100.16	100.75	104.91	110.25	112.99	106.97	107.27	107.36	110.84
Motor cars	0.39	100.00	100.41	100.80	99.76	99.67	99.78	99.76	99.86	99.87	99.87	100.02	106.28	114.84	119.04	111.14	111.75	111.77	117.28
Motor cycles	0.03	100.00	103.86	106.67	106.15	106.15	105.61	105.61	105.61	105.61	105.61	105.61	105.61	105.61	105.61	86.65	86.65	86.65	86.65
Bicycles	0.14	100.00	102.04	100.78	100.46	100.28	99.76	99.76	97.91	99.60	99.47	99.47	99.47	99.47	99.47	99.63	99.19	99.54	99.40
Animal drawn vehicles	0.04	100.00	102.36	102.36	102.36	102.36	102.36	102.36	100.94	100.94	100.94	108.52	109.74	106.16	106.16	108.32	108.32	108.32	107.12
Operational of personal transport equipment	6.50	100.00	100.28	100.67	95.26	95.01	94.75	94.47	94.13	94.04	94.54	95.26	96.03	95.56	95.09	111.74	112.03	113.04	113.10
Spare parts and accessories for personal transport equipment	0.61	100.00	103.19	103.34	99.74	99.51	99.27	99.31	99.61	99.70	99.72	100.44	100.38	99.90	99.90	94.79	95.34	95.31	95.16
Fuels and lubricants for personal transport equipment	5.89	100.00	99.98	100.39	94.80	94.55	94.28	93.97	93.56	93.45	94.00	94.73	95.58	95.11	94.59	113.50	113.76	114.88	114.96
Transport Services	1.30	100.00	103.87	104.39	99.87	99.83	98.68	98.66	98.65	98.68	98.68	98.38	98.37	98.26	98.35	83.30	83.92	83.77	83.81
Passenger tran	1.30	100.00	103.87	104.39	99.87	99.83	98.68	98.66	98.65	98.68	98.68	98.38	98.37	98.26	98.35	83.30	83.92	83.77	83.81
COMMUNICATION	2.65	100.00	120.92	116.65	113.75	114.36	113.75	113.66	113.60	113.64	113.62	116.55	116.55	119.18	119.37	105.41	105.39	105.03	104.71
Postal Services	0.01	100.00	101.79	101.79	99.76	100.02	99.58	99.58	99.58	99.58	99.58	102.03	102.03	102.03	102.03	116.76	110.49	110.49	110.49
POSTAL SERVICE	0.01	100.00	101.79	101.79	99.76	100.02	99.58	99.58	99.58	99.58	99.58	102.03	102.03	102.03	102.03	116.76	110.49	110.49	110.49
Telephone and telefax equipment and telephone and tel	0.35	100.00	104.98	104.12	101.89	101.89	101.89	101.79	101.79	101.69	101.57	105.99	105.99	114.55	115.77	97.10	97.15	96.58	95.35
Telephone and telfax equipments	0.35	100.00	104.98	104.12	101.89	101.89	101.89	101.79	101.79	101.69	101.57	105.99	105.99	114.55	115.77	97.10	97.15	96.58	95.35
Telephone and telefax services	2.29	100.00	123.48	118.66	115.65	116.37	115.65	115.57	115.49	115.56	115.56	118.26	118.26	119.99	120.01	106.64	106.64	106.32	106.13
Telephone and telefax services	2.29	100.00	123.48	118.66	115.65	116.37	115.65	115.57	115.49	115.56	115.56	118.26	118.26	119.99	120.01	106.64	106.64	106.32	106.13
RECREATION AND CULTURE	2.27	100.00	102.88	103.30	100.78	100.48	100.18	100.15	98.81	98.78	98.78	98.33	97.96	97.73	99.11	92.92	92.57	92.43	91.76

All ITEMS	100.00	100.00	109.54	109.13	104.13	103.66	103.45	103.26	102.68	102.80	102.81	103.06	103.90	104.79	106.27	105.98	105.79	105.96	106.76
Food and non alcoholic beverages	31.30	100.00	109.68	108.39	102.28	101.24	100.93	100.59	100.45	100.28	100.25	100.59	101.65	102.01	104.31	105.68	104.91	105.06	104.75
Non food	68.70	100.00	109.48	109.46	104.98	104.76	104.60	104.47	103.70	103.95	103.97	104.18	104.92	106.05	107.16	106.12	106.18	106.37	107.68

Change in % from Mar 24 to Apr 24 Change in % from Apr 23 to Apr 24

-0.3	3.8
-0.3	3.7
-0.2	8.7
-2.4	2.6
-0.7	3.1
-0.8	4.1
-1.6	-4.8
-1.5	3.4
0.0	-0.4
9.7	9.9
0.3	-2.6
-1.2	7.4
-0.1	-5.1
-1.5	10.8
0.1	-0.3
-0.3	0.1
-0.5	-0.7
0.4	1.8
-0.5	-0.2
0.9	-1.3
0.9	-1.3
0.4	-1.9
0.9	-2.6
0.0	-15.9
1.2	-2.6
-0.4	-4.6
0.0	4.7
0.3	-1.6
-1.4	0.8
-1.4	3.3
-1.2	-10.3
1.6	2.8
2.4	0.5
2.4	0.5
-0.2	1.2
-0.2	1.2
0.1	-27.5
0.0	-37.9
0.0	4.5
0.0	-14.8
0.2	4.2
-0.3	19.4

0.0	47.1
-0.9	-8.7
-14.8	-19.7
0.1	-16.3
0.3	0.6
-0.5	-5.8
-0.5	-5.8
0.8	-5.7
0.8	-5.7
-0.5	-4.1
-0.5	-4.1
0.8	10.2
0.8	10.2
-0.2	-1.0
-0.2	-1.2
-0.9	1.2
0.5	3.7
-0.6	3.9
4.0	3.2
-0.1	-4.7
-0.6	-5.8
-0.6	-5.8
0.4	-3.9
0.5	-5.4
0.0	-17.1
0.0	1.8
0.0	-4.2
0.0	-4.2
0.3	13.2
3.2	10.6
4.9	17.5
0.0	-18.0
-0.1	-0.4
-1.1	4.6
0.1	19.4
-0.2	-4.1
0.1	21.9
0.0	-15.1
0.0	-15.1
-0.3	-7.9
0.0	11.0
0.0	11.0
-1.3	-6.4
-1.3	-6.4
-0.2	-8.2
-0.2	-8.2
-0.7	-8.4

-1.9	-10.9
-0.2	-13.1
-13.9	-17.2
-3.8	9.1
0.4	-12.2
-0.9	-14.6
-0.3	-13.5
-0.2	-12.0
-5.8	-29.3
0.0	-2.0
0.3	-7.4
0.0	-1.3
-0.6	-7.3
0.9	2.0
-0.4	-18.7
-1.4	-10.4
6.7	15.4
11.2	17.6
11.2	17.6
8.5	17.3
8.5	17.3
0.7	5.6
0.7	5.6
0.0	12.0
0.0	12.0
0.0	0.5
0.0	0.5
-1.0	0.1
0.5	2.3
0.5	2.3
-2.0	-1.4
-2.0	-1.4
-0.4	-2.3
-0.2	2.9
-0.3	-1.4
-1.3	-29.5
-0.1	7.4
-1.2	-14.3
0.0	-18.8
-1.3	-13.6
-1.8	2.2
0.0	4.0
-3.9	0.0
0.0	-11.2
0.0	-11.2
-0.2	-7.2
-0.2	-7.2

0.8	3.2
-0.3	3.8
1.2	2.9

Consumer Price Index (June 2022=100)

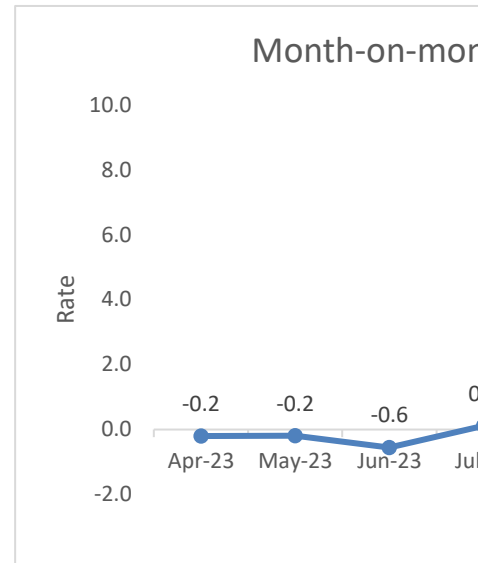
	Inflation Rate (%) Monthly
2020 Jan Rebased	-0.9
Feb	-9.3
Mar	-2.0
Apr	-1.5
May	-0.2
Jun	-0.5
Jul	0.2
Aug	-1.0
Sep	-1.3
Oct	-0.2
Nov	1.8
Dec	1.8
2021 Jan	2.5
Feb	-0.1
Mar	0.6
Apr	0.2
May	1.9
Jun	4.2
Jul	0.0
Aug	0.5
Sep	1.0
Oct	1.5
Nov	1.1
Dec	0.8
2022 Jan	1.4
Feb	1.6
Mar	1.6
Apr	5.5
May	3.0
Jun	8.7
Jul	3.7
Aug	1.6
Sep	-0.7
Oct	3.0
Nov	1.2
Dec	0.8
2023 Jan	-0.4
Feb	-4.6

Mar	-0.5
Apr	-0.2
May	-0.2
Jun	-0.6
Jul	0.1
Aug	0.0
Sep	0.2
Oct	0.8
Nov	0.9
Dec	1.4
2024 Jan	-0.3
Feb	-0.2
Mar	0.2
Apr	0.8
Mean Month on Month rate of Inflation from Jan-Apr 2024	0.1
Mean Month on Month rate of Inflation from Jan-Dec 2023	-0.2
Mean Month on Month rate of Inflation from Jan to Dec 2022	2.6
Mean Month on Month rate of Inflation from Jan to Dec 2021	1.2

	Weights			Change in % from	
		Mar-24	Apr-24	Mar 24 to Apr 24	Percentage Contributions
HOUSING, WATER, ELECTRICITY, GAS & C	27.62	107.10	108.79	1.6	0.4
EDUCATION	4.25	152.64	162.81	6.7	0.4
TRANSPORT	8.39	108.11	108.41	0.3	0.0
CLOTHING & FOOTWEAR	4.35	99.02	99.38	0.4	0.0
FURNITURE AND EQUIPMENT	5.29	104.41	104.70	0.3	0.0
ALCOHOLIC BEVERAGES & TOBACCO	4.90	96.17	96.21	0.1	0.0
HEALTH	1.42	96.74	96.68	-0.1	0.0
COMMUNICATION	2.65	105.03	104.71	-0.3	0.0
RESTAURANTS AND HOTELS	1.08	117.07	115.92	-1.0	0.0
RECREATION AND CULTURE	2.27	92.43	91.76	-0.7	0.0
MISCELLANEOUS GOODS AND SERVICES	6.46	90.62	90.25	-0.4	0.0
FOOD & NON ALCOHOLIC BEVERAGES	31.30	105.06	104.75	-0.3	-0.1
All ITEMS	100.00	105.96	106.76	0.8	0.8

	Weights			Change in % from	
		Apr-23	Apr-24	Apr 23 to Apr 24	Percentage Contributions
FOOD & NON ALCOHOLIC BEVERAGES	31.30	100.93	104.75	3.8	1.2
TRANSPORT	8.39	95.75	108.41	13.2	1.0
EDUCATION	4.25	141.08	162.81	15.4	0.9
HOUSING, WATER, ELECTRICITY, GAS & C	27.62	105.78	108.79	2.8	0.8
FURNITURE AND EQUIPMENT	5.29	104.12	104.70	0.6	0.0
RESTAURANTS AND HOTELS	1.08	115.84	115.92	0.1	0.0
ALCOHOLIC BEVERAGES & TOBACCO	4.90	96.52	96.21	-0.3	0.0
HEALTH	1.42	101.43	96.68	-4.7	-0.1
CLOTHING & FOOTWEAR	4.35	101.32	99.38	-1.9	-0.1
MISCELLANEOUS GOODS AND SERVICES	6.46	92.38	90.25	-2.3	-0.1
RECREATION AND CULTURE	2.27	100.18	91.76	-8.4	-0.2
COMMUNICATION	2.65	113.75	104.71	-7.9	-0.2
All ITEMS	100.00	103.45	106.76	3.2	3.2

Apr-23	May-23	Jun-23	Jul-23	Aug-23	Sep-23
-0.2	-0.2	-0.6	0.1	0.0	0.2



Oct-23	Nov-23	Dec-23	Jan-24	Feb-24	Mar-24	Apr-24
0.8	0.9	1.4	-0.3	-0.2	0.2	0.8

12th Inflation rate from April 2023 to April 2024

